

Modular firestop collars for combustible pipes

AF MULTICOLLAR consists of a preformed stainless steel foil which is cut to size on-site according to the pipe diameter. On-site, the foil must be coupled to the **AF FIREFILL 50** intumescent sleeve.

AF MULTICOLLAR is used in all compartmentalised sector penetrations of wall and floor plastic pipes, such as sanitary drains, rainwater and vent pipes. It is certified for application on inclined combustible pipes, combustible pipe bundles containing electrical cables and insulated metal pipes.

During a fire, heat causes the intumescent material to expand until it occupies the internal space, ensuring resistance to smoke and flames.

CHARACTERISTICS

Appearance: stainless steel band to be assembled with an intumescent sleeve;

Color: polished steel;

Size of the metal band: 2500x50 mm;

Size of the intumescent sleeve: 8600x50x4 mm;

Diameter: from 30 to 250 mm;

Free expansion: >20:1 ;

Activation temperature: 180°C.

APPLICATION METHOD:

- 1. measure the pipe diameter and cut the stainless-steel foil and sleeve according to the table below;
- 2. wrap the sleeve around the pipe and secure it with adhesive tape;
- 3. place the stainless-steel foil around the sleeve by overlapping the borders of at least 30 mm then secure with the supplied self- tapping screws (at least two for each collar);
- 4. secure the collar to the wall by using self-tapping screws or metal expansion plugs.

* For 200 and 250 diameters it is necessary to mount two collars per side placed side-by-side, joining them with the supplied self-tapping screws (follow the instructions).

PACKAGING AND STRORAGE

Cardboard boxes containing: metal foil, intumescent sleeve, self-tapping screws and flexible measuring tape. If the product is stored under standard conditions there is no storage time limit.

SPECIFICATIONS

Supply and application of **AF MULTICOLLAR** firestop collars, consisting of stainless-steel element to be cut to size according to the pipe diameter. It has been designed to contain the **Firefill 50** intumescent material and provide EI 180 protection to combustible and insulated metal pipe horizontal and vertical penetrations.

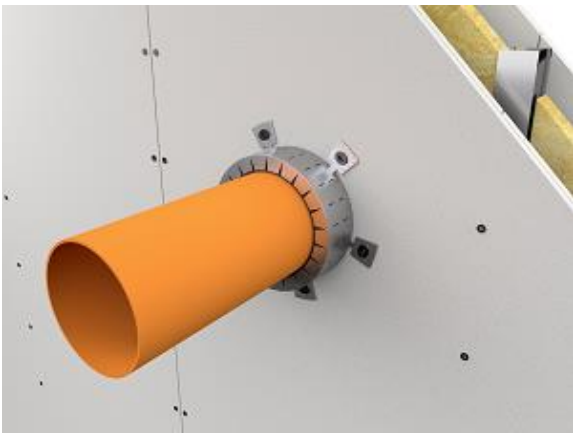
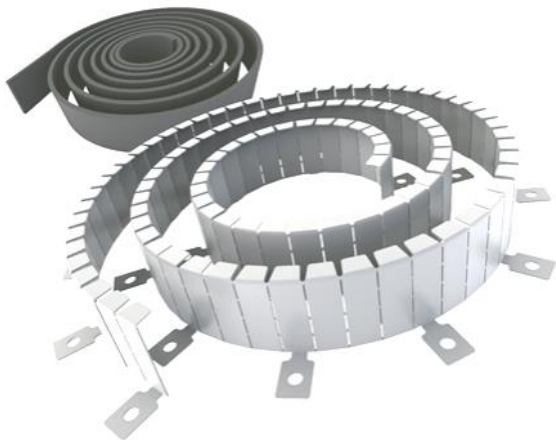
CERTIFICATIONS

Class EI 120 (UNI EN 1366-3) Plasterboard wall

Class EI 180 (UNI EN 1366-3) Gasbeton floor and wall

Class EI 120 (UNI EN 1366-3) Plasterboard self-supporting wall

Class EI 120 (UNI EN 1366-3) Sandwich wall



PIPE DIAMETRE (mm)	FOIL LENGTH (mm)	SLEEVE LENGTH (mm)	No. OF LAYERS	No. OF POSSIBLE COLLARS (2500)
30	200	240	2	12
40	230	310	2	10
50	260	380	2	9
63	300	460	2	8
80	350	560	2	7
90	380	620	2	6
100	410	680	2	6
110	440	750	2	5
125	515	1310	3	4
140	560	1450	3	4
160	620	1640	3	4
200	2x795	2x3500	5	1
250	2x955	2x4300	5	1